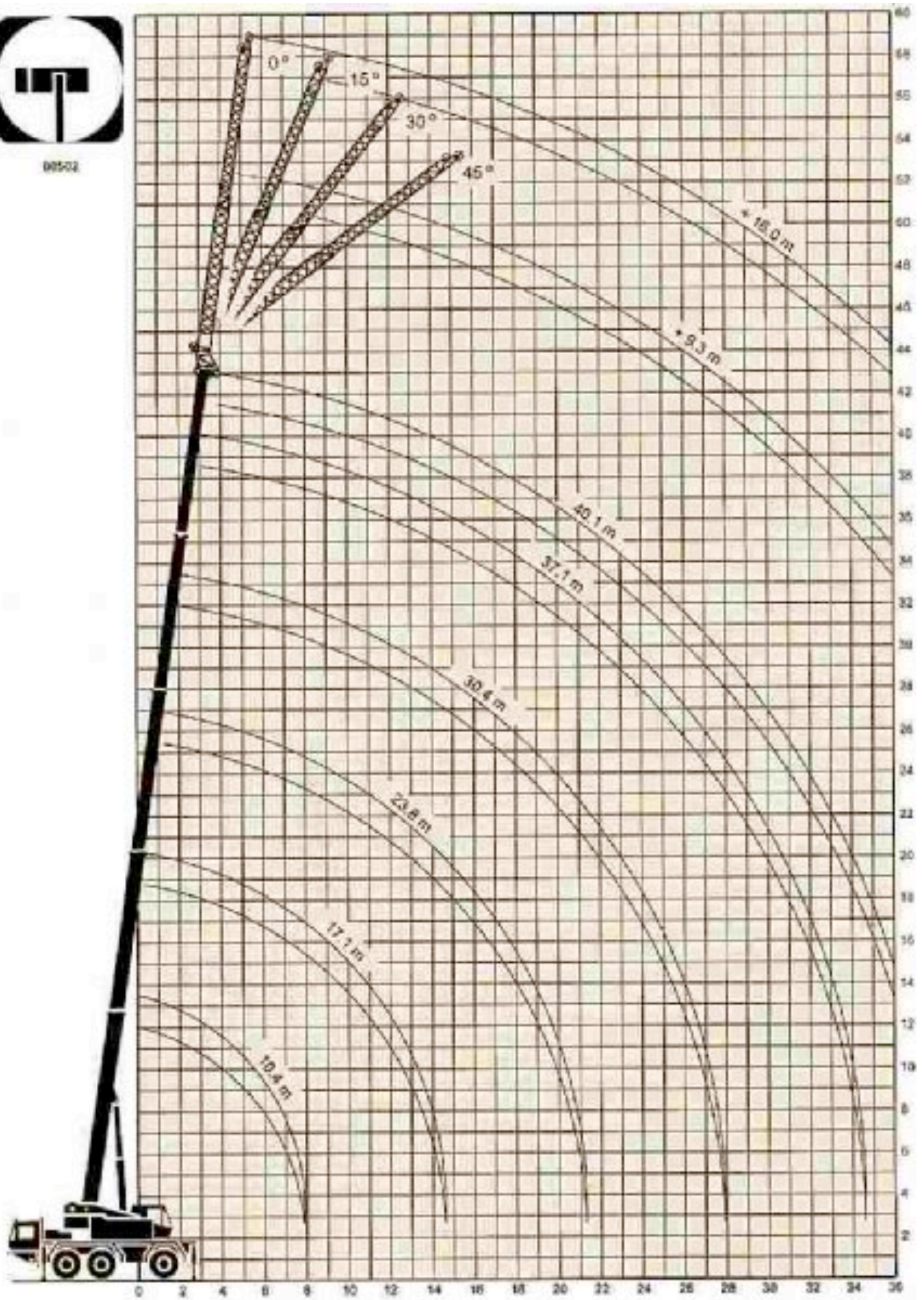




00502





CONTRAPESO / COUNTERWEIGHT / CONTREPOIDS / BALLAST			1 t / 7 t
PLUMA PRINCIPAL. GRÚA SOBRE NEUMÁTICOS. POR DETRÁS MAIN BOOM. CRANE ON WHEELS. OVER REAR FLÉCHE PRINCIPALE. GRUE SUR PNEUS. SUR L'ARRIÈRE TELESKOP AUSLEGER. ARBEITSZUSTAND: FREISTEHEND. NACH HINTEN			
RADIO RADIUS PORTÉE AUSLADUNG m	75%		
	CONTRAPESO / COUNTERWEIGHT / CONTREPOIDS / BALLAST		
	1 t	7 t	I II-III-IV
3.5	8.3	8.7	0 0
4	7.3	7.6	0 0
5	5.7	6.0	0 0
6	4.3	4.5	0 0
7	3.3	3.5	0 0
8	3.3	3.5	0 30
9	2.8	3.0	0 30
10	2.2	2.4	0 30
11	1.6	1.8	0 30
12	1.3	1.4	0 30
13	1.0	1.1	0 30
14	0.8	0.8	0 30

**CONTRAPESO / COUNTERWEIGHT / CONTREPOIDS / BALLAST****1 t**

PLUMA PRINCIPAL, GRÚA SOBRE ESTABILIZADORES EXTENDIDOS 7.3 m x 4.3 m. ZONA DE TRABAJO 360°

MAIN BOOM, CRANE ON 7.3 m x 4.3 m EXTENDED OUTRIGGERS. ROTATION 360°

FLÈCHE PRINCIPALE, GRUE SUR STABILISATEURS EN EXTENSION 7.3 m x 4.3 m. ROTATION 360°

TELESKOP-AUSLEGER, ARBEITSZUSTAND: ABGESTÜTZT (7.3 m x 4.3 m). ARBEITSBEREICH: 360°

RADIO RADIUS PORTÉE AUSLADUNG m	75%									RADIO RADIUS PORTÉE AUSLADUNG m
	LONGITUD DE PLUMA BOOM LENGTH LONGUEUR DE FLÈCHE TELESKOP-AUSLEGERLÄNGEN									
	10.4 m	17.1 m		23.8 m		30.4 m		37.1 m	40.1 m	
3	41.0	30.0	18.0							3
4	32.0	27.2	18.4	17.0	15.0					4
5	24.0	20.0	17.6	16.5	14.5	14.0	12.0			5
6	16.5	12.1	14.1	13.2	13.0	13.2	11.5	9.5		6
7	10.5	8.0	10.2	9.2	10.4	10.0	10.7	9.4	7.7	7
8		6.0	8.0	7.2	8.4	7.8	9.4	9.2	7.6	8
9		4.7	6.6	5.7	7.0	6.4	7.8	8.8	7.4	9
10		3.7	5.4	4.5	5.9	5.3	6.5	7.5	6.8	10
12		2.0	3.7	2.8	4.2	3.5	4.6	4.1	4.1	12
14		0.8	2.8	1.9	3.0	2.4	3.3	2.8	2.8	14
16				1.3	2.2	1.5	2.4	1.9	1.9	16
18				0.8	1.6	0.9	1.8	1.2	1.2	18
20					1.2	0.6	1.3	0.7	0.7	20
22							0.9			22
24							0.6			24

RADIO RADIUS PORTÉE AUSLADUNG m	85%									RADIO RADIUS PORTÉE AUSLADUNG m
	LONGITUD DE PLUMA BOOM LENGTH LONGUEUR DE FLÈCHE TELESKOP-AUSLEGERLÄNGEN									
	10.4 m	17.1 m		23.8 m		30.4 m		37.1 m	40.1 m	
3	45.0	31.5	18.0							3
4	35.2	29.9	18.4	17.0	15.0					4
5	26.4	22.0	18.4	17.0	15.0	14.0	12.0			5
6	18.2	13.3	15.5	14.5	14.3	14.0	12.0	9.5		6
7	11.6	8.8	11.2	10.1	11.4	11.0	11.8	9.5	7.7	7
8		6.6	8.8	7.9	9.2	8.6	10.3	9.5	7.7	8
9		5.2	7.3	6.3	7.7	7.0	8.6	9.5	7.7	9
10		4.1	5.9	5.0	6.5	5.8	7.2	8.3	7.5	10
12		2.2	4.1	3.1	4.6	3.9	5.1	4.5	4.5	12
14		0.9	3.1	2.1	3.3	2.6	3.6	3.1	3.1	14
16				1.4	2.4	1.7	2.6	2.1	2.1	16
18				0.9	1.8	1.0	2.0	1.3	1.3	18
20					1.3	0.7	1.4	0.8	0.8	20
22							1.0			22
24							0.7			24

I	0	90	0	90	0	90	0	90	100	I
II-III-IV	0	0	30	30	60	60	90	90	100	II-III-IV

**CONTRAPESO / COUNTERWEIGHT / CONTREPOIDS / BALLAST****7 t**

PLUMA PRINCIPAL: GRÚA SOBRE ESTABILIZADORES EXTENDIDOS 7.3 m x 4.3 m, ZONA DE TRABAJO 360°

MAIN BOOM: CRANE ON 7.3 m x 4.3 m EXTENDED OUTRIGGERS, ROTATION 360°

FLÈCHE PRINCIPALE: GRUE SUR STABILISATEURS EN EXTENSION 7.3 m x 4.3 m, ROTATION 360°

TELESKOPUSLEGER: ARBEITSZUSTAND: ABGESTÜTZT (7.3 m x 4.3 m), ARBEITSBEREICH: 360°

RADIO RADIUS PORTÉE AUSLADUNG m	75%									RADIO RADIUS PORTÉE AUSLADUNG m
	LONGITUD DE PLUMA BOOM LENGTH LONGUEUR DE FLÈCHE TELESKOPUSLEGERLÄNGEN									
	10.4 m	17.1 m		23.8 m		30.4 m		37.1 m	40.1 m	
3	43.0	31.5	18.0							3
4	35.5	31.2	18.4	17.0	15.0					4
5	29.0	26.0	19.1	17.9	15.0	14.0	12.0			5
6	23.0	20.2	18.5	17.5	14.8	14.0	11.5	9.5		6
7	17.0	15.3	16.5	15.0	13.5	13.6	10.7	9.4	7.7	7
8		11.0	13.0	11.5	12.4	12.0	9.8	9.2	7.6	8
9		8.3	10.1	9.2	11.5	10.0	9.0	8.8	7.4	9
10		6.5	8.4	7.5	9.8	8.3	8.3	8.4	7.1	10
12		4.0	6.0	5.2	6.9	5.9	6.5	6.4	6.4	12
14		2.0	4.3	3.7	4.9	4.1	5.0	4.8	4.8	14
16				2.5	3.7	3.0	3.9	3.5	3.5	16
18				1.7	2.9	2.2	3.2	2.6	2.6	18
20				1.3	2.3	1.6	2.5	1.9	1.9	20
22						1.1	2.0	1.4	1.4	22
24						0.8	1.6	1.0	1.0	24
26						0.6	1.3	0.7	0.7	26

RADIO RADIUS PORTÉE AUSLADUNG m	85%									RADIO RADIUS PORTÉE AUSLADUNG m
	LONGITUD DE PLUMA BOOM LENGTH LONGUEUR DE FLÈCHE TELESKOPUSLEGERLÄNGEN									
	10.4 m	17.1 m		23.8 m		30.4 m		37.1 m	40.1 m	
3	45.0	31.5	18.0							3
4	36.5	31.5	18.4	17.0	15.0					4
5	30.8	28.6	19.1	17.9	15.0	14.0	12.0			5
6	25.3	22.2	19.1	17.9	15.0	14.0	12.0	9.5		6
7	18.7	16.8	18.2	16.5	14.9	14.0	11.8	9.5	7.7	7
8		12.1	14.3	12.7	13.6	13.2	10.8	9.5	7.7	8
9		9.1	11.1	10.1	12.7	11.0	9.9	9.5	7.7	9
10		7.2	9.2	8.3	10.8	9.1	9.1	9.2	7.7	10
12		4.4	6.6	5.7	7.8	6.5	7.2	7.0	7.0	12
*14		2.2	4.7	4.1	5.4	4.5	5.5	5.3	5.3	14
16				2.8	4.1	3.3	4.3	3.9	3.9	16
18				1.9	3.2	2.4	3.5	2.9	2.9	18
20				1.4	2.5	1.8	2.8	2.1	2.1	20
22						1.2	2.2	1.5	1.5	22
24						0.9	1.8	1.1	1.1	24
26						0.7	1.4	0.8	0.8	26

I	0	90	0	90	0	90	0	90	100	I
II-III-IV	0	0	30	30	60	60	90	90	100	II-III-IV

**CONTRAPESO / COUNTERWEIGHT / CONTREPOIDS / BALLAST****7 t**

PLUMA PRINCIPAL, GRÚA SOBRE ESTABILIZADORES TOTALMENTE EXTENDIDOS, ZONA DE TRABAJO 360°

MAIN BOOM, CRANE ON FULLY EXTENDED OUTRIGGERS, ROTATION 360°

FLÈCHE PRINCIPALE, GRUE SUR STABILISATEURS EN EXTENSION TOTALE, ROTATION 360°

TELESKOP-AUSLEGER, ARBEITSZUSAND, ARBEITSTÜTZE (VOLLE STÜTZBASIS), ARBEITSBEREICH: 360°

75%**LONGITUD DE PLUMA**

BOOM LENGTH

LONGUEUR DE FLÈCHE

TELESKOP-AUSLEGERLÄNGEN

RADIO RADIUS PORTÉE AUSLADUNG m	75%								RADIO RADIUS PORTÉE AUSLADUNG m	
	LONGITUD DE PLUMA BOOM LENGTH LONGUEUR DE FLÈCHE TELESKOPIERLEGERLÄNGEN									
	10.4 m	17.1 m		23.8 m		30.4 m		37.1 m		40.1 m
3	59.0'/45.0	31.5	18.0							3
4	38.5'/29.5	31.2	18.4	17.0	15.0					4
5	30.8	28.3	19.1	17.9	15.0	14.0	12.0			5
6	25.7	24.4	19.9	18.3	14.8	14.0	11.5	9.5		6
7	21.3	20.2	20.2	17.8	13.5	13.8	10.7	9.4	7.7	7
8		18.7	18.8	16.0	12.4	12.8	9.8	9.2	7.6	8
9		14.0	16.1	13.9	11.5	12.0	9.0	8.8	7.4	9
10		11.6	13.7	12.0	10.6	11.0	8.3	8.4	7.1	10
12		9.1	10.1	9.0	9.1	9.1	7.0	7.3	6.5	12
14		5.8	7.7	6.8	7.8	7.3	6.0	6.3	5.9	14
16				5.1	6.6	5.7	5.2	5.4	5.3	16
18				3.9	5.4	4.4	4.0	4.6	4.6	18
20				3.1	4.4	3.4	4.1	3.9	3.9	20
22						2.7	3.7	3.1	3.1	22
24						2.1	3.2	2.4	2.4	24
26						1.6	2.7	1.8	1.8	26
28								1.3	1.3	28
30								0.9	0.9	30
32								0.6	0.6	32

85%**LONGITUD DE PLUMA**

BOOM LENGTH

LONGUEUR DE FLÈCHE

TELESKOP-AUSLEGERLÄNGEN

RADIO RADIUS PORTÉE AUSLADUNG m	85%								RADIO RADIUS PORTÉE AUSLADUNG m	
	LONGITUD DE PLUMA BOOM LENGTH LONGUEUR DE FLECHE TELESKOPIAUSLEGGERLÄNGEN									
	10.4 m	17.1 m		23.8 m		30.4 m		37.1 m		40.1 m
3	59.0'/45.0	31.5	18.0							3
4	38.5'/29.5	31.5	18.4	17.0	15.0					4
5	30.8	30.8	19.1	17.9	15.0	14.0	12.0			5
6	25.7	25.7	19.9	18.3	15.0	14.0	12.0	9.5		6
7	22.0	22.0	20.2	18.3	14.9	14.9	11.8	9.5	7.7	7
8		18.4	18.8	17.8	13.8	14.9	10.8	9.5	7.7	8
9		15.4	17.1	15.3	12.7	13.2	9.9	9.5	7.7	9
10		12.6	15.1	13.2	11.7	12.1	9.1	9.2	7.7	10
12		8.9	11.1	9.9	10.0	10.9	7.7	8.0	7.2	12
14		6.4	8.5	7.8	8.5	8.0	6.5	6.9	6.5	14
16				5.8	7.3	6.3	5.7	5.9	5.8	16
18				4.3	5.9	4.8	5.1	5.1	5.1	18
20				3.4	4.8	3.7	4.8	4.3	4.9	20
22						3.0	4.1	3.4	3.4	22
24						2.3	3.5	2.6	2.6	24
26						1.8	3.0	2.0	2.0	26
28								1.4	1.4	28
30								1.0	1.0	30
32								0.7	0.7	32

I	0	90	0	90	0	90	0	90	100	I
II-III-IV	0	0	30	30	60	60	90	90	100	II-III-IV

**CONTRAPESO / COUNTERWEIGHT / CONTREPOIDS / BALLAST****1 t**

PLUMA PRINCIPAL+PLUMÍN DE CELOSÍA. GRÚA SOBRE ESTABILIZADORES TOTALMENTE EXTENDIDOS. ZONA DE TRABAJO 360°
 MAIN BOOM+LATTICE JIB. CRANE ON FULLY EXTENDED OUTRIGGERS. ROTATION 360°
 FLÈCHE PRINCIPALE+FLÈCHETTE TREILLIS. GRUE SUR STABILISATEURS EN EXTENSION TOTALE. ROTATION 360°
 TELESKOP-AUSLEGER+GITTERSPITZE. ARBEITSZUSTAND: ABGESTÜTZT (VOLLE STÜTZBASIS). ARBEITSBEREICH: 360°

RADIO RADIUS PORTÉE AUSLADUNG m	75%												RADIO RADIUS PORTÉE AUSLADUNG m
	LONGITUD DE PLUMA+PLUMÍN MAIN BOOM+JIB LENGTH LONGUEUR DE FLÈCHE+FLÈCHETTE TELESKOP-AUSLEGER- UND SPITZENLÄNGEN												
	34.2 m + 16.0 m				37.1 m + 16.0 m				40.1 m + 16.0 m				
	0°	15°	30°	45°	0°	15°	30°	45°	0°	15°	30°	45°	
8	2.3												8
9	2.3				2.1								9
10	2.3				2.1				1.7				10
12	2.3	2.2			2.1				1.7				12
14	2.2	2.1	1.9		2.1	2.0			1.7	1.7			14
16	2.1	2.0	1.8		2.1	1.9	1.6		1.7	1.7	1.5		16
18	2.0	1.9	1.7	1.5	2.0	1.8	1.5	1.3	1.7	1.7	1.5	1.1	18
20	1.7	1.7	1.6	1.4	1.7	1.6	1.4	1.2	1.6	1.6	1.4	1.1	20
22	1.3	1.4	1.4	1.3	1.3	1.3	1.3	1.2	1.3	1.3	1.3	1.1	22
24	0.9	1.0	1.1	1.1	0.9	1.0	1.1	1.1	0.9	1.0	1.1	1.0	24
26	0.6	0.7	0.8	0.8	0.6	0.7	0.8	0.8	0.6	0.7	0.8	0.8	26
28		0.5	0.6	0.6		0.5	0.6	0.6		0.5	0.6	0.6	28

RADIO RADIUS PORTÉE AUSLADUNG m	85%												RADIO RADIUS PORTÉE AUSLADUNG m
	LONGITUD DE PLUMA+PLUMÍN MAIN BOOM+JIB LENGTH LONGUEUR DE FLÈCHE+FLÈCHETTE TELESKOP-AUSLEGER- UND SPITZENLÄNGEN												
	34.2 m + 16.0 m				37.1 m + 16.0 m				40.1 m + 16.0 m				
	0°	15°	30°	45°	0°	15°	30°	45°	0°	15°	30°	45°	
8	2.3												8
9	2.3				2.1								9
10	2.3				2.1				1.7				10
12	2.3	2.3			2.1				1.7				12
14	2.3	2.3	2.1		2.1	2.1			1.7	1.7			14
16	2.3	2.2	2.0		2.1	2.1	1.8		1.7	1.7	1.7		16
18	2.2	2.1	1.9	1.7	2.1	2.0	1.7	1.4	1.7	1.7	1.7	1.2	18
20	1.9	1.9	1.8	1.5	1.9	1.8	1.5	1.3	1.7	1.7	1.5	1.2	20
22	1.4	1.5	1.5	1.4	1.4	1.4	1.4	1.3	1.4	1.4	1.4	1.2	22
24	1.0	1.1	1.2	1.2	1.0	1.1	1.2	1.2	1.0	1.1	1.2	1.1	24
26	0.7	0.8	0.9	0.9	0.7	0.8	0.9	0.9	0.7	0.8	0.9	0.9	26
28		0.6	0.7	0.7		0.6	0.7	0.7		0.6	0.7	0.7	28

I	80	80	80	80	90	90	90	90	100	100	100	100	I
II-III-IV	80	80	80	80	90	90	90	90	100	100	100	100	II-III-IV

**CONTRAPESO / COUNTERWEIGHT / CONTREPOIDS / BALLAST****1 t**

PLUMA PRINCIPAL+PLUMÍN DE CELOSÍA. GRÚA SOBRE ESTABILIZADORES TOTALMENTE EXTENDIDOS. ZONA DE TRABAJO 360°
 MAIN BOOM+LATTICE JIB. CRANE ON FULLY EXTENDED OUTRIGGERS. ROTATION 360°
 FLÈCHE PRINCIPALE+FLÈCHETTE TREILLIS. GRUE SUR STABILISATEURS EN EXTENSION TOTALE. ROTATION 360°
 TELESKOP-AUSLEGER+GITTERSPITZE. ARBEITSZUSTAND: ABGESTÜTZT (VOLLE STÜTZBASIS). ARBEITSBEREICH: 360°

RADIO RADIUS PORTÉE AUSLADUNG m	75%												RADIO RADIUS PORTÉE AUSLADUNG m
	LONGITUD DE PLUMA+PLUMÍN MAIN BOOM+JIB LENGTH LONGUEUR DE FLÈCHE+FLÈCHETTE TELESKOP-AUSLEGER- UND SPITZENLÄNGEN												
	34.2 m + 9.3 m				37.1 m + 9.3 m				40.1 m + 9.3 m				
	0°	15°	30°	45°	0°	15°	30°	45°	0°	15°	30°	45°	
7	5.0												7
8	5.0				4.1								8
9	4.9	4.5			4.1				3.1				9
10	4.8	4.5	4.3		4.1	3.7			3.1	3.1			10
12	4.7	4.3	4.1	3.2	4.0	3.6	3.4		3.1	3.1	2.9		12
14	4.4	4.0	3.9	3.1	3.9	3.5	3.3	2.8	3.1	3.1	2.8	2.4	14
16	3.8	3.6	3.6	3.0	3.6	3.3	3.1	2.7	3.0	3.0	2.7	2.3	16
18	2.8	2.9	3.0	2.8	2.8	2.9	2.8	2.6	2.8	2.7	2.5	2.2	18
20	2.0	2.1	2.2	2.3	2.0	2.1	2.2	2.3	2.0	2.1	2.1	2.0	20
22	1.3	1.4	1.5	1.6	1.3	1.4	1.5	1.6	1.3	1.4	1.5	1.6	22
24	0.8	0.9	1.0	1.1	0.8	0.9	1.0	1.1	0.8	0.9	1.0	1.1	24
26	0.5	0.6	0.7	0.8	0.5	0.6	0.7	0.8	0.5	0.6	0.7	0.8	26
28			0.5				0.5	0.6			0.5	0.6	28

RADIO RADIUS PORTÉE AUSLADUNG m	85%												RADIO RADIUS PORTÉE AUSLADUNG m
	LONGITUD DE PLUMA+PLUMÍN MAIN BOOM+JIB LENGTH LONGUEUR DE FLÈCHE+FLÈCHETTE TELESKOP-AUSLEGER- UND SPITZENLÄNGEN												
	34.2 m + 9.3 m				37.1 m + 9.3 m				40.1 m + 9.3 m				
	0°	15°	30°	45°	0°	15°	30°	45°	0°	15°	30°	45°	
7	5.0												7
8	5.0				4.1								8
9	5.0	5.0			4.1				3.1				9
10	5.0	5.0	4.7		4.1	4.1			3.1	3.1			10
12	5.0	4.7	4.5	3.5	4.1	4.0	3.7		3.1	3.1	3.1		12
14	4.8	4.4	4.3	3.4	4.1	3.9	3.6	3.1	3.1	3.1	3.1	2.6	14
16	4.2	4.0	4.0	3.3	4.0	3.6	3.4	3.0	3.1	3.1	3.0	2.5	16
18	3.1	3.2	3.3	3.1	3.1	3.2	3.1	2.9	3.1	3.0	2.8	2.4	18
20	2.2	2.3	2.4	2.5	2.2	2.3	2.4	2.5	2.2	2.3	2.3	2.2	20
22	1.4	1.5	1.7	1.8	1.4	1.5	1.7	1.8	1.4	1.5	1.7	1.8	22
24	0.9	1.0	1.1	1.2	0.9	1.0	1.1	1.2	0.9	1.0	1.1	1.2	24
26	0.6	0.7	0.8	0.9	0.6	0.7	0.8	0.9	0.6	0.7	0.8	0.9	26
28			0.6				0.6	0.7			0.6	0.7	28

I	90	90	80	80	90	90	90	90	100	100	100	100	I
II-III-IV	80	80	80	80	90	90	90	90	100	100	100	100	II-III-IV

**CONTRAPESO / COUNTERWEIGHT / CONTREPOIDS / BALLAST****7 t**

PLUMA PRINCIPAL+PLUMÍN DE CELOŠIA. GRÚA SOBRE ESTABILIZADORES TOTALMENTE EXTENDIDOS. ZONA DE TRABAJO 360°
 MAIN BOOM+LATTICE JIB. CRANE ON FULLY EXTENDED OUTRIGGERS. ROTATION 360°
 FLÈCHE PRINCIPALE+FLÈCHETTE TREILLIS. GRUE SUR STABILISATEURS EN EXTENSION TOTALE. ROTATION 360°
 TELESKOP-AUSLEGER+GITTERSPITZE. ARBEITSZUSTAND: ABGESTÜTZT (VOLLE STÜTZBASIS). ARBEITSBEREICH: 360°

RADIO RADIUS PORTÉE AUSLADUNG m	75%												RADIO RADIUS PORTÉE AUSLADUNG m
	LONGITUD DE PLUMA+PLUMÍN MAIN BOOM+JIB LENGTH LONGUEUR DE FLÈCHE+FLÈCHETTE TELESKOP-AUSLEGER- UND SPITZENLÄNGEN												
	34.2 m + 16.0 m				37.1 m + 16.0 m				40.1 m + 16.0 m				
	0°	15°	30°	45°	0°	15°	30°	45°	0°	15°	30°	45°	
8	2.3												8
9	2.3				2.1								9
10	2.3				2.1				1.7				10
12	2.3	2.2			2.1				1.7				12
14	2.2	2.1	1.9		2.1	2.0			1.7	1.7			14
16	2.1	2.0	1.8		2.0	1.9	1.6		1.7	1.7	1.5		16
18	2.0	1.9	1.7	1.5	1.9	1.8	1.5	1.3	1.7	1.7	1.5	1.1	18
20	1.9	1.8	1.6	1.4	1.8	1.7	1.4	1.2	1.7	1.7	1.4	1.1	20
22	1.8	1.7	1.5	1.4	1.7	1.6	1.4	1.2	1.6	1.6	1.4	1.1	22
24	1.7	1.5	1.4	1.3	1.6	1.5	1.3	1.2	1.5	1.5	1.3	1.1	24
26	1.4	1.4	1.3	1.2	1.4	1.4	1.3	1.2	1.4	1.4	1.3	1.1	26
28	1.2	1.3	1.2	1.1	1.2	1.3	1.2	1.1	1.2	1.3	1.2	1.0	28
30	1.0	1.1	1.1	1.0	1.0	1.1	1.1	1.0	1.0	1.1	1.1	1.0	30
32	0.8	0.9	0.9	0.9	0.8	0.9	0.9	0.9	0.8	0.9	0.9	0.9	32
34	0.6	0.7	0.7		0.6	0.7	0.7	0.8	0.6	0.7	0.7	0.8	34
36		0.5	0.5			0.5	0.6			0.5	0.5	0.7	36
38							0.5						38

RADIO RADIUS PORTÉE AUSLADUNG m	85%												RADIO RADIUS PORTÉE AUSLADUNG m
	LONGITUD DE PLUMA+PLUMÍN MAIN BOOM+JIB LENGTH LONGUEUR DE FLÈCHE+FLÈCHETTE TELESKOP-AUSLEGER- UND SPITZENLÄNGEN												
	34.2 m + 16.0 m				37.1 m + 16.0 m				40.1 m + 16.0 m				
	0°	15°	30°	45°	0°	15°	30°	45°	0°	15°	30°	45°	
8	2.3												8
9	2.3				2.1								9
10	2.3				2.1				1.7				10
12	2.3	2.3			2.1				1.7				12
14	2.3	2.3	2.1		2.1	2.1			1.7	1.7			14
16	2.3	2.2	2.0		2.1	2.1	1.8		1.7	1.7	1.7		16
18	2.2	2.1	1.9	1.7	2.1	2.0	1.7	1.4	1.7	1.7	1.7	1.2	18
20	2.1	2.0	1.8	1.5	2.0	1.9	1.5	1.3	1.7	1.7	1.5	1.2	20
22	2.0	1.9	1.7	1.5	1.9	1.8	1.5	1.3	1.7	1.7	1.5	1.2	22
24	1.9	1.7	1.5	1.4	1.8	1.7	1.4	1.3	1.7	1.7	1.4	1.2	24
26	1.5	1.5	1.4	1.3	1.5	1.5	1.4	1.3	1.5	1.5	1.4	1.2	26
28	1.3	1.4	1.3	1.2	1.3	1.4	1.3	1.2	1.3	1.4	1.3	1.1	28
30	1.1	1.2	1.2	1.1	1.1	1.2	1.2	1.1	1.1	1.2	1.2	1.1	30
32	0.9	1.0	1.0	1.0	0.9	1.0	1.0	1.0	0.9	1.0	1.0	1.0	32
34	0.7	0.8	0.8		0.7	0.8	0.8	0.9	0.7	0.8	0.8	0.9	34
36		0.6	0.6			0.6	0.7			0.6	0.6	0.8	36
38							0.6						38

I	80	80	80	80	90	90	90	90	100	100	100	100	I
II-III-IV	80	80	80	80	90	90	90	90	100	100	100	100	II-III-IV

**CONTRAPEO / COUNTERWEIGHT / CONTREPOIDS / BALLAST****7 t**

PLUMA PRINCIPAL+PLUMÍN DE CELOSIA. GRUA SOBRE ESTABILIZADORES TOTALMENTE EXTENDIDOS. ZONA DE TRABAJO 360°
 MAIN BOOM+LATTICE JIB. CRANE ON FULLY EXTENDED OUTRIGGERS. ROTATION 360°
 FLÈCHE PRINCIPALE+FLÈCHETTE TRELLIS. GRUE SUR STABILISATEURS EN EXTENSION TOTALE. ROTATION 360°
 TELESKOPUSLEGER+GITTERSPITZE. ARBEITSZUSTAND: ABGESTÜTZT (VOLLE STÜTZBASIS). ARBEITSBEREICH: 360°

RADIO RADIUS PORTÉE AUSLADUNG m	75%												RADIO RADIUS PORTÉE AUSLADUNG m
	LONGITUD DE PLUMA+PLUMIN MAIN BOOM+JIB LENGTH LONGUEUR DE FLÈCHE+FLÈCHETTE TELESKOPUSLEGER- UND SPITZENLÄNGEN												
	34.2 m + 9.3 m				37.1 m + 9.3 m				40.1 m + 9.3 m				
	0°	15°	30°	45°	0°	15°	30°	45°	0°	15°	30°	45°	
7	5.0												7
8	5.0				4.1								8
9	4.9	4.5			4.1				3.1				9
10	4.8	4.5	4.3		4.1	3.7			3.1	3.1			10
12	4.7	4.3	4.1	3.2	4.0	3.6	3.4		3.1	3.1	2.9		12
14	4.4	4.1	3.9	3.1	3.9	3.5	3.3	2.8	3.1	3.1	2.8	2.4	14
16	4.2	3.9	3.6	3.0	3.8	3.3	3.1	2.7	3.0	3.0	2.7	2.3	16
18	4.0	3.7	3.3	2.9	3.6	3.1	2.8	2.6	3.0	2.9	2.6	2.2	18
20	3.7	3.4	3.0	2.8	3.3	2.9	2.6	2.4	2.9	2.7	2.4	2.1	20
22	3.0	3.0	2.6	2.5	2.9	2.6	2.4	2.1	2.7	2.5	2.2	1.9	22
24	2.4	2.5	2.3	2.2	2.4	2.3	2.1	1.8	2.3	2.2	1.9	1.6	24
26	1.8	1.9	1.9	1.9	1.8	1.9	1.8	1.6	1.8	1.8	1.6	1.4	26
28	1.4	1.5	1.5		1.4	1.5	1.4	1.4	1.4	1.4	1.3	1.2	28
30	1.0	1.1	1.1		1.0	1.1	1.1		1.0	1.1	1.1	1.0	30
32	0.7	0.8	0.8		0.7	0.8	0.8		0.7	0.8	0.9		32
34	0.5	0.6			0.5	0.6	0.6				0.6		34

RADIO RADIUS PORTÉE AUSLADUNG m	85%												RADIO RADIUS PORTÉE AUSLADUNG m
	LONGITUD DE PLUMA+PLUMIN MAIN BOOM+JIB LENGTH LONGUEUR DE FLÈCHE+FLÈCHETTE TELESKOPUSLEGER- UND SPITZENLÄNGEN												
	34.2 m + 9.3 m				37.1 m + 9.3 m				40.1 m + 9.3 m				
	0°	15°	30°	45°	0°	15°	30°	45°	0°	15°	30°	45°	
7	5.0												7
8	5.0				4.1								8
9	5.0	5.0			4.1				3.1				9
10	5.0	5.0	4.7		4.1	4.1			3.1	3.1			10
12	5.0	4.7	4.5	3.5	4.1	4.0	3.7		3.1	3.1	3.1		12
14	4.8	4.5	4.3	3.4	4.1	3.9	3.6	3.1	3.1	3.1	3.1	2.6	14
16	4.6	4.3	4.0	3.3	4.1	3.6	3.4	3.0	3.1	3.1	3.0	2.5	16
18	4.4	4.1	3.6	3.2	4.0	3.4	3.1	2.9	3.1	3.1	2.9	2.4	18
20	4.1	3.7	3.3	3.1	3.6	3.2	2.9	2.6	3.1	3.0	2.6	2.3	20
22	3.3	3.3	2.9	2.8	3.2	2.9	2.6	2.3	3.0	2.8	2.4	2.1	22
24	2.6	2.8	2.5	2.4	2.6	2.5	2.3	2.0	2.5	2.4	2.1	1.8	24
26	2.0	2.1	2.1	2.1	2.0	2.1	2.0	1.8	2.0	2.0	1.8	1.5	26
28	1.5	1.7	1.7		1.5	1.7	1.5	1.5	1.5	1.5	1.4	1.3	28
30	1.1	1.2	1.2		1.1	1.2	1.2		1.1	1.2	1.2	1.1	30
32	0.8	0.9	0.9		0.8	0.9	0.9		0.8	0.9	1.0		32
34	0.6	0.7			0.6	0.7	0.7				0.7		34

I	80	80	80	80	90	90	90	90	100	100	100	100	I
II-III-IV	80	80	80	80	90	90	90	90	100	100	100	100	II-III-IV

**CONTRAPESO / COUNTERWEIGHT / CONTREPOIDS / BALLAST****1 t**

PLUMA PRINCIPAL. GRÚA SOBRE ESTABILIZADORES TOTALMENTE EXTENDIDOS. ZONA DE TRABAJO 360°

MAIN BOOM. CRANE ON FULLY EXTENDED OUTRIGGERS. ROTATION 360°

FLÈCHE PRINCIPALE. GRUE SUR STABILISATEURS EN EXTENSION TOTALE. ROTATION 360°

TELESKOP-AUSLEGER. ARBEITSZUSTAND: ABGESTÜTZT (VOLLE STÜTZBASIS). ARBEITSBEREICH: 360°

RADIO RADIUS PORTÉE AUSLADUNG m	75%									RADIO RADIUS PORTÉE AUSLADUNG m
	LONGITUD DE PLUMA BOOM LENGTH LONGUEUR DE FLÈCHE TELESKOP-AUSLEGERLÄNGEN									
	10.4 m	17.1 m		23.8 m		30.4 m		37.1 m	40.1 m	
3	43.0	31.5	18.0							3
4	35.5	31.2	18.4	17.0	15.0					4
5	29.0	26.0	19.1	17.9	15.0	14.0	12.0			5
6	23.0	20.2	18.5	17.5	14.8	14.0	11.5	9.5		6
7	17.0	15.3	16.5	15.0	13.5	13.6	10.7	9.4	7.7	7
8		10.7	13.0	11.5	12.4	12.0	9.8	9.2	7.6	8
9		8.0	10.1	9.0	11.5	10.0	9.0	8.8	7.4	9
10		6.2	8.4	7.0	9.6	8.3	8.3	8.4	7.1	10
12		3.8	6.0	4.7	6.5	5.7	6.5	6.4	6.4	12
14		2.0	4.3	3.2	4.5	3.8	4.8	4.4	4.4	14
16				2.2	3.3	2.4	3.6	3.0	3.0	16
18				1.3	2.6	1.5	2.8	2.0	2.0	18
20				0.8	2.0	1.0	2.3	1.4	1.4	20
22						0.6	1.8	1.0	1.0	22
24							1.4	0.7	0.7	24
26							1.0			26

RADIO RADIUS PORTÉE AUSLADUNG m	85%									RADIO RADIUS PORTÉE AUSLADUNG m
	LONGITUD DE PLUMA BOOM LENGTH LONGUEUR DE FLÈCHE TELESKOP-AUSLEGERLÄNGEN									
	10.4 m	17.1 m		23.8 m		30.4 m		37.1 m	40.1 m	
3	45.0	31.5	18.0							3
4	36.5	31.5	18.4	17.0	15.0					4
5	30.8	26.6	19.1	17.9	15.0	14.0	12.0			5
6	25.3	22.2	19.1	17.9	15.0	14.0	12.0	9.5		6
7	18.7	16.8	18.2	16.5	14.9	14.0	11.8	9.5	7.7	7
8		11.8	14.3	12.7	13.6	13.2	10.6	9.5	7.7	8
9		8.8	11.1	9.9	12.7	11.0	9.9	9.5	7.7	9
10		6.8	9.2	7.7	10.8	9.1	9.1	9.2	7.7	10
12		4.2	6.6	5.2	7.2	6.3	7.2	7.0	7.0	12
14		2.2	4.7	3.5	5.0	4.2	5.3	4.8	4.8	14
16				2.4	3.6	2.6	4.0	3.3	3.3	16
18				1.4	2.9	1.7	3.1	2.2	2.2	18
20				0.9	2.2	1.1	2.5	1.5	1.5	20
22						0.7	2.0	1.1	1.1	22
24							1.5	0.8	0.8	24
26							1.1			26

I	0	90	0	90	0	90	0	90	100	I
II-III-IV	0	0	30	30	60	60	90	90	100	II-III-IV



AT-50/40

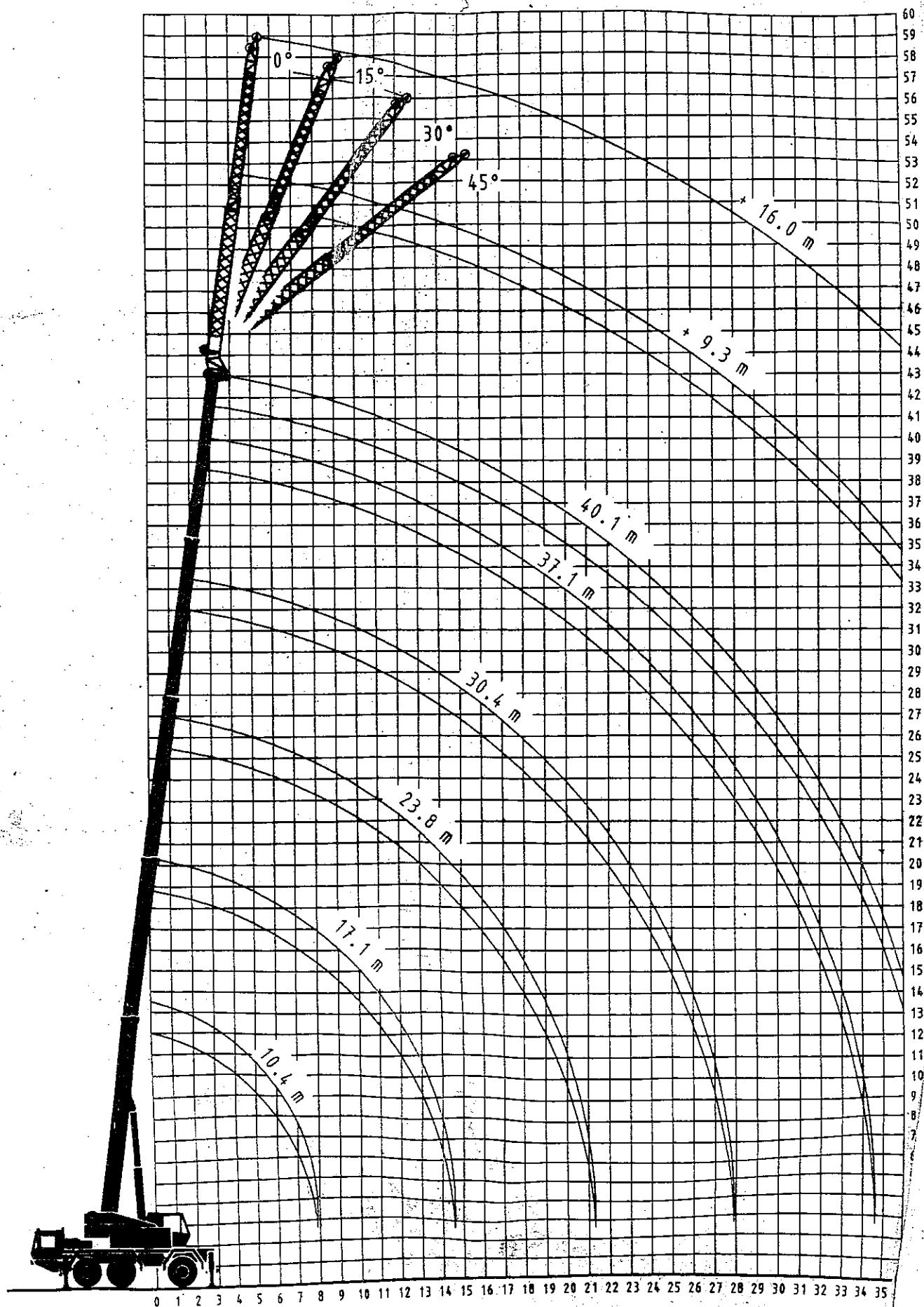
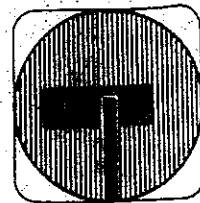
(00502)

DIAGRAMA DE ALCANCES

RANGE DIAGRAM

DIAGRAMME DES PORTÉES

AUSLADUNGSDIAGRAMM





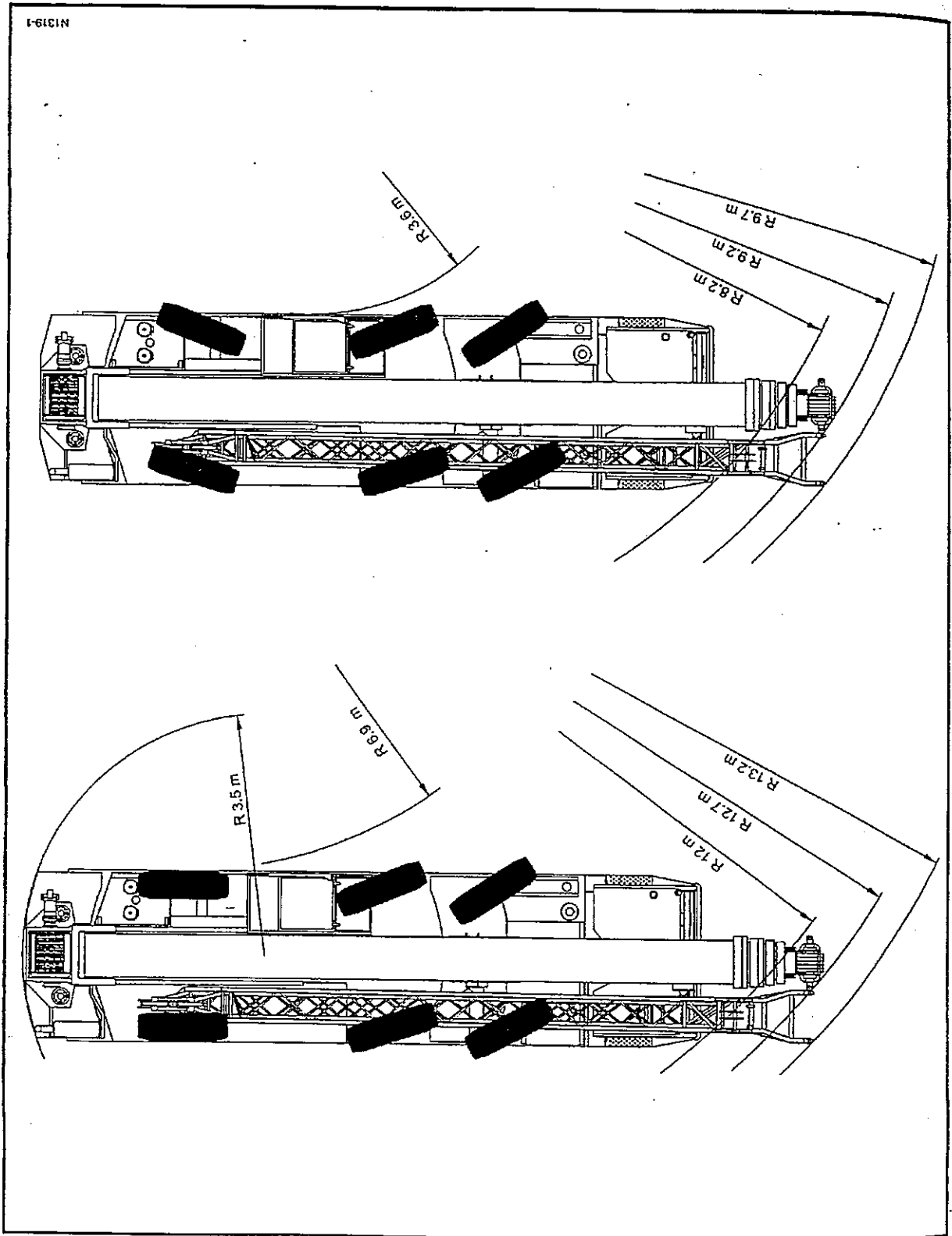
2.1.4.1 Radios de giro

(01310)

RADIO
RADIUS
PORTÉE
AUSLAUNGS

m

III-IV
1
26
24
22
20
18
16
14
12
10
9
8
7
6
5
4
3



N1319-1

2.1.4 Dimensiones

